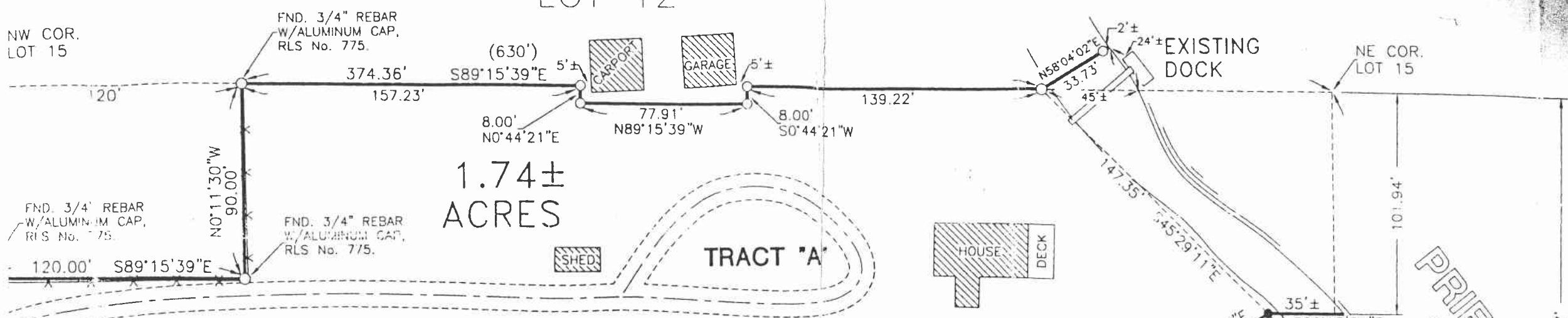


LOT 12

15.
1.74
TRACT
recorde
tract b
Westerl
from th
with th
5.30 f
15.
E. parc
E 9.
Lot 15
line of
line, to
with th
said N
#775);
69.94
paralle
W 5
Lot 15
0'11"
point
subjec

NW COR.
LOT 15



FND. 3/4" REBAR
W/ALUMINUM CAP,
RLS No. 775.

FND. 3/4" REBAR
W/ALUMINUM CAP,
RLS No. 775.

FND. 3/4" REBAR
W/ALUMINUM CAP,
RLS No. 775.

FND. 3/4" REBAR
W/ALUMINUM CAP,
RLS No. 775.

FND. 3/4" REBAR
W/ALUMINUM CAP,
RLS No. 775.

FND. 3/4" REBAR
W/ALUMINUM CAP,
RLS No. 775.

FND. 3/4" REBAR
W/ALUMINUM CAP,
RLS No. 775.

FND. 1-1/4"
PIPE AND CAP

FND. REBAR W/ALUMINUM/
CAP, RLS No. 775.

"KANIKSU ACRE TRACTS"

LOT 17

S89°15'39"E
630.52'
(630')

SE. COR.
LOT 15

103'

SW. COR.
LOT 15

ORDINARY
WATER L

PRIEST
RIVER

224.97'

101.94'

NE COR.
LOT 15

EXISTING
DOCK

HOUSE
DECK

TRACT "A"

TRACT "B"

1.74±
ACRES

1.16±
ACRES



Sandpoint Title
 120 South Second Avenue
 Sandpoint Id. 83864
 Tel: (208)263-2222
 Fax: (208)265-4040

This sketch is furnished without charge solely for the purpose of assisting in locating said premises and Sandpoint Title Insurance assumes no liability for inaccuracies therein.

geoAdvantage
 www.digitshare.org 208.777.1252