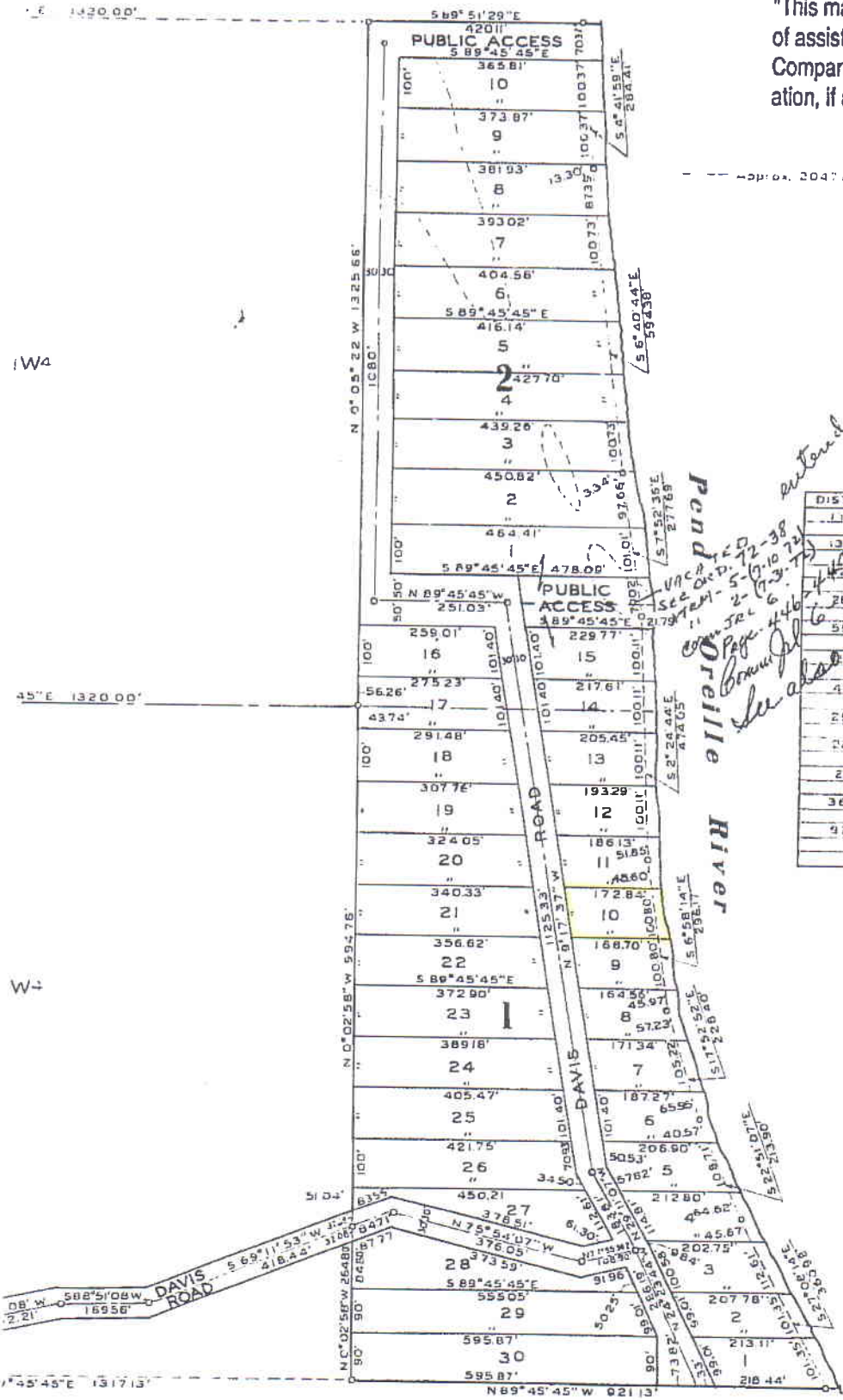


"This map is made solely for the purpose of assisting in locating the land and the Company assumes no liability for variation, if any, with an actual survey."



BOUNDARY CLOSURE

DISTANCE	BEARING	CORNER	SINE	NORTH	S
1123.74	N 41° 59' 56" W	9999993	00086267	1325.74	
1325.66	N 0° 05' 22"	00999878	00156110	325.66	
449.74	S 89° 51' 31" E	00247140	99999693		
281.31	S 89° 51' 31" E	99663716	00193148		
55.11	S 6° 40' 44" E	99121357	11635475		
177.89	S 7° 52' 36" E	99096535	13704116		
474.09	S 2° 24' 44" E	99911387	04208878		
296.17	S 6° 58' 14" E	99260865	12135926		
228.40	S 17° 52' 52" E	95.69566	30704285		
213.90	S 27° 51' 07" E	92151145	38815115		
360.98	S 27° 08' 14" E	88991667	4562314		
921.13	N 89° 45' 45" W	004.4545	99999141	3.82	
TOTALS				2653.22	0

P.O. RIVER